

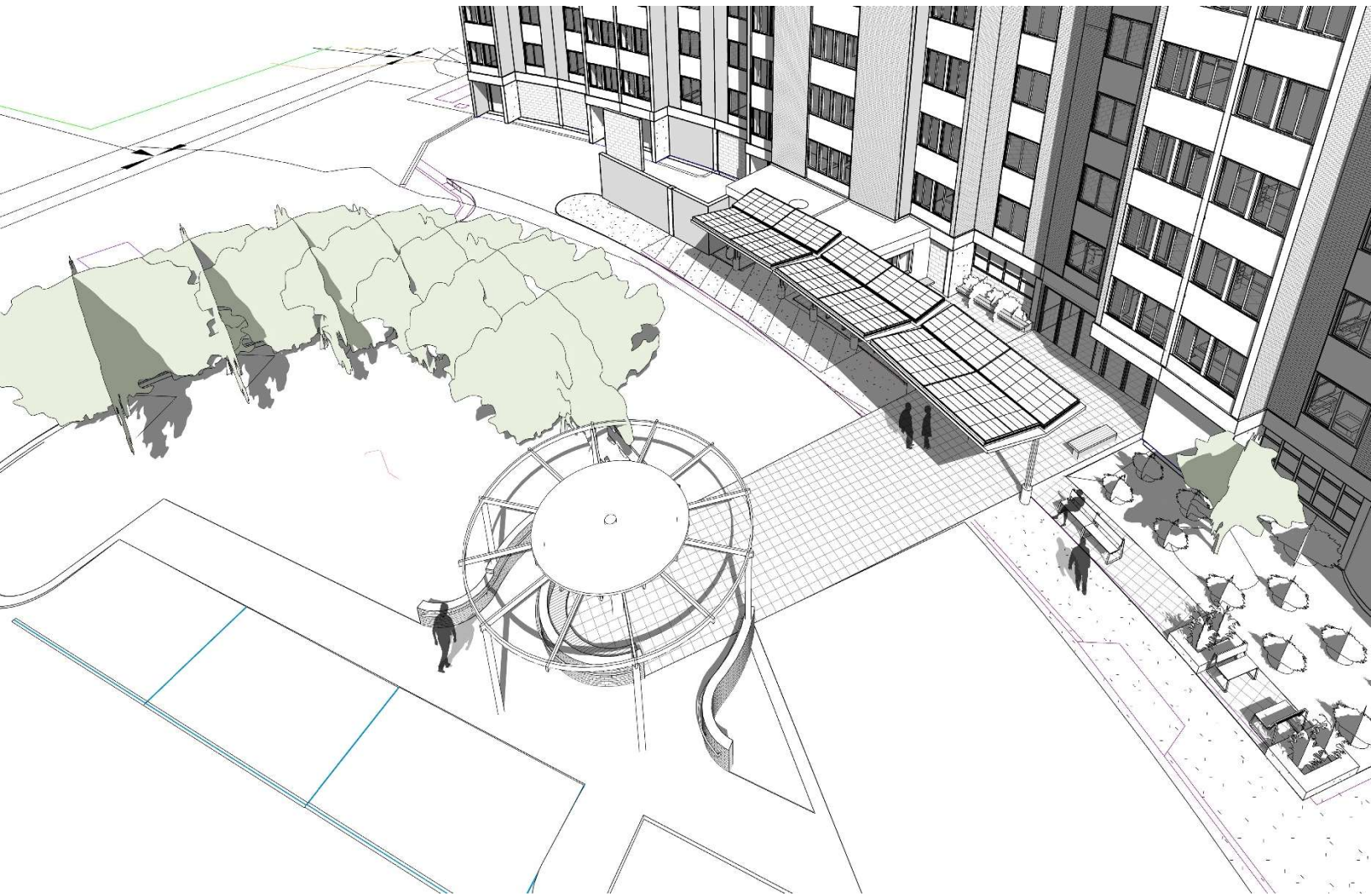
# Crescent Halls Renovation Project – Design Overview

**Public Housing Association of Residents (PHAR)**

1000 Preston Avenue, Suite C, Charlottesville, VA 22903

phone 434-984-3255

[www.pharcville.org](http://www.pharcville.org)



## What Does “Total Renovation” Mean?

Everything will be new, only the “bare bones” of the building will be old.

New Systems: Heating, Cooling, Electricity, Plumbing, Lighting, Fire Safety and Sprinklers, Intercom, Security, Elevators, New Roof, Back-Up Generator will provide power to elevators, heating, and emergency lighting during any power outages

Redesign of: apartments, community spaces and rooms, entrances, landscape, parking

New drywall, walls, appliances, cabinets, kitchens, bathrooms, toilets, tiling, windows

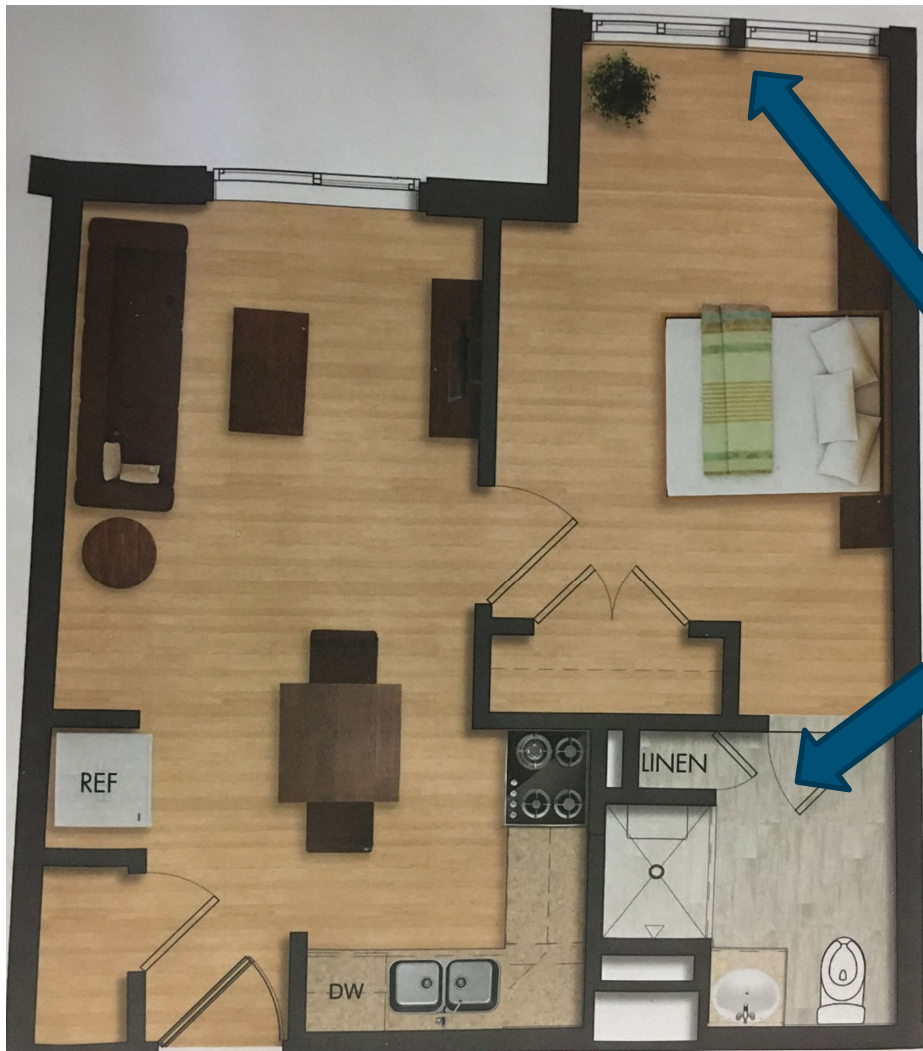
Almost everything will be new or replaced with new materials and modernized to last for at least 50 years

## Major Changes Inside the Apartments

- Controllable thermostat
- Kitchens will be fully redesigned an “open” kitchen plan and a “L shaped” counter space.
- Handicap units will have better accessibility features in the kitchen.
- The open kitchen will also make living rooms roomier.
- Apartments with closed off balconies will have the wall removed to make a larger bedroom.
- Overhead lighting.

## Great Features & Amenities that you asked for!

- Controllable Thermostat
- All new appliances including: refrigerator, and stove/oven
- Dishwasher
- Double Sink
- Overhead Lighting
- “L” shaped kitchen layout
- More and New Counter Space
- Taller “Comfort” Toilets – ADA Compliant
- Walk in/roll-in(handicap) showers with seat and removable shower head
- New, usable, intercom system
- New windows
- “Luxury Tile Plank” floors
- Larger bedrooms
- New Cabinets

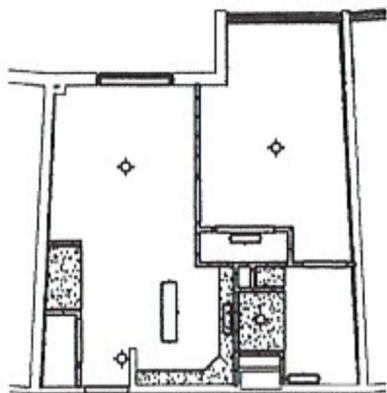


**ONE BEDROOM  
OVERHEAD VIEW**

- **BALCONY WALL  
REMOVED/MORE  
BEDROOM SPACE**

**LARGER BATHROOM**

- **OPEN "L" SHAPED  
KITCHEN**



**2 1 BR UNIT REFLECTED CEILING PLAN**  
A403 1/8" = 1'-0"



**SIDE VIEW of BATHROOM**

*Vanity Sink (non-handicap unit)*

*Taller ADA "Comfort" Toilet*

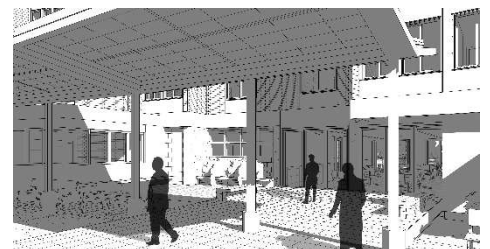


## Features and Amenities- Common Spaces

- More Handicap Parking
- Accessible path from parking through island to entrance and breezeway
- Gazebo or Structure for the “island”
- “Frontside” improvements including a large covering, benches, and bus stop
- Security system to include electronic entrance at every point in the building
- Possible video intercom system
- Small reception area with space for reception/security
- Bigger mail area with easy to reach mailboxes and sorting table
- New exercise equipment
- Possible new computers and computer area in TV room
- Family style TV room
- Larger community room kitchen with serving window, stove, large refrigerator, double sink and better access for residents
- Inside/outside Breezeway
- Community area on “backside of building” with space for seating, plantings and gathering
- Rebuilt laundry area possible additional machines



“Frontside” View with covered island area, accessible pathway to breezeway and entrance, covered gathering area and benches



Covered gathering area outside of indoor/outdoor breezeway



Indoor/Outdoor Breezeway looking towards “backside” retractable glass doors