

## BILEMBO YA SURDOSE YA OPIATE



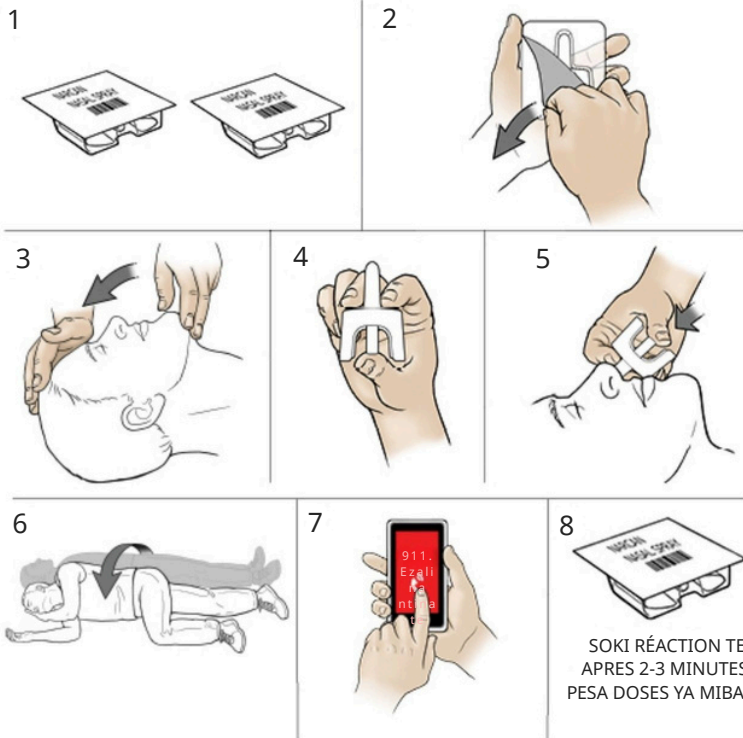
- TROUBLED PEMEMI
- MALEMBE, POSA YA POTO
  - MIKOLO YA KOKANGA
  - MPO NA KOPEPA MPO NA
  - MOPEPE EZALI KOZANGA TO KO GURGER



- INRESPONSIVE REPNSE TE NA BA SON YA MAKASI TO YA TOUCH YELL KOMBO, "OZALI OK?" FIRMER FRICMENT BA NOUX NA MOSUKA YA CENTRE YA CHEST



- BILEMBO MOSUSU
- LIPS BLUE TO BA FINGERNILS
  - PALE TO ASHY LOPOSO OYO EZOYOKA COOL NA TOUCH
  - PINPOINT BA ÉTUDIANTS
  - PULSE EZA MALEMBE



BA TAPES YA NTINA PONA KOSALELA PULORS YA NARCAN NASAL